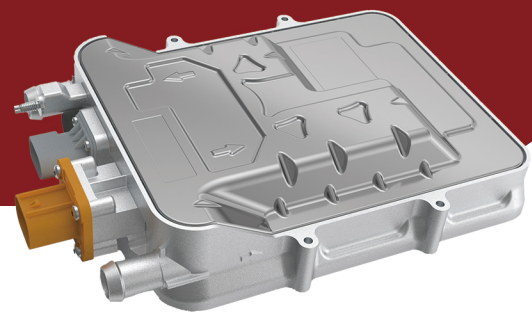


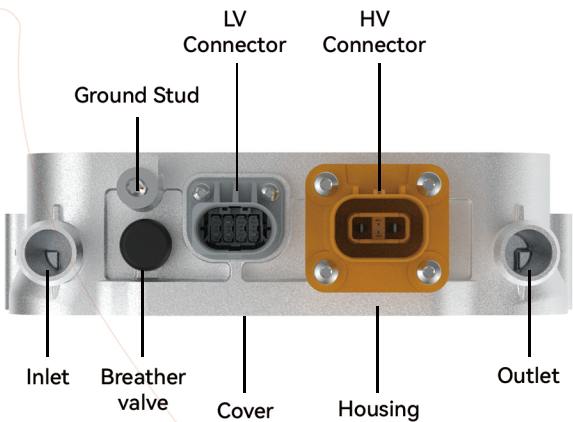
High Voltage Coolant Heater (HVCH)

F89000 Series(800V)



Characteristic Advantages

- Rare-Earth Thick Film Heating Technology.
- Customized special HVCH by customer needs.
- High efficiency, Precise temperature control, Smaller packing space requirements.
- Ultra-compact modular designing: Smaller and lighter
- Stable quality, Long service life, No power decaying.
- Small starting surge current, Small ripple current, Accurate stepless control.
- Low comprehensive energy-consumption, Increase driving mileage.
- Low overall usage cost.



Technical Parameters

Heating Power	0 ~ 9.0 (kW)	Dimensions	288x200x53 (mm)
HV Voltage Range DC	450 ~ 950(V)	Weight	2.37 (kg)
Control Voltage	16~32 (VDC)	I/O Spigot	STD φ20 (mm)
Power Scope	10% ~ 100%		optional NW12
Communication	LIN / CAN		optional NW16
Cab Heating	YES	HV connection	TE 2103124-1
Battery Heating	YES	LV connection	TE 2334467-2
Efficiency	> 95 (%)	Temp. Sensor Outlet	x1
IP Protection Class	IP 6K9K IP 67	Temp. Sensor Inlet	x1
Electrical safety	ISO 6469 Part 3	Ground Stud	M6